



HOME TABLET 7"



USER GUIDE v1.2

→ How can I control my complete home with one easy, intuitive and efficient solution?

→ This guide describes how to install, program and operate Zipato home control system.

➔ COPYRIGHT

© 2012 Tri plus grupa d.o.o. All Rights Reserved. Copyright by Tri plus grupa d.o.o.

No part of this manual may be reproduced or transmitted in any form without the expressed, written permission of Tri plus grupa d.o.o.

➔ TRADEMARKS

Zipato and the Zipato logo are registered Trademarks.

All other product names mentioned herein may be trademarks or registered trademarks of their respective companies.

➔ NOTICE

Although Zipato has attempted to ensure the accuracy of the content of this manual, it is possible that this document may contain technical inaccuracies, typographical, or other errors. Zipato assumes no liability for any error in this publication, and for damages, whether direct, indirect, incidental, and consequential or otherwise, that may result from such error, including, but not limited to loss of data or profits. Zipato provides this publication “as is” without warranty of any kind, either express or implied, including, but not limited to implied warranties of merchantability or fitness for a particular purpose. The published information in the manual is subject to change without notice.

Zipato reserves the right to make changes in the product design, layout, and driver revisions without notification to its users.

⚡ IMPORTANT SAFETY INFORMATION

To avoid contact with electrical current:

- Never install an Ethernet connection in wet locations unless that connector is specifically designed for wet locations.
- Do not place Ethernet wiring or connections in any conduit, outlet or junction box containing electrical wiring.
- Installation of inside wire may bring you close to electrical wire, conduit, terminals and other electrical facilities. Extreme caution must be used to avoid electrical shock from such facilities. Avoid contact with all such facilities.
- Ethernet wiring must be at least 2 m from bare power wiring or lightning rods and associated wires, and at least 15 cm from other wire (antenna wires, doorbell wires, wires from transformers to neon signs), steam or hot water pipes, and heating ducts.

→ ELECTROMAGNETIC COMPATIBILITY

In proper state and when operated properly, the product complies with all the requirements in respect of interference radiation according to EN 300 220-1, EN 300 220-2, EN 301 489-17, EN 301 489-1 and EN 300 328. The connections conducting HF signals must neither be manipulated nor damaged.

CONTENTS

INTRODUCTION	05
PACKAGE CONTENTS	12
WALL MOUNTING HOME TABLET	13
INSTALLING HOME TABLET	15
ACCOUNT CREATION AND REGISTRATION	16
ADDING DEVICES	19
REMOVING DEVICES	19
SPECIFICATIONS	20
LIMITED PRODUCT WARRANTY	22
DECLARATION OF CONFORMITY	27
DISPOSING AND RECYCLING YOUR PRODUCT	30

→ INTRODUCTION

THANK YOU for purchasing Zipato Home Tablet. This guide describes how to install, program and operate your Home Tablet. Zipato Home Tablet makes YOUR home smart by using advanced technology to hide the complexity of home networking - delivering a simple smart home. It can be placed on any wall in the home and automatically talks to all the connected devices in the house, connecting them to the cloud so that consumers can control them using tablets, smart phones, computers or TVs— at home or on the go. Zipato Gateway supports a variety of communication standards including Z-WAVE, ONVIF, WiFi and UPnP.



Once configured, it works stand-alone, but also features cloud support for advanced monitoring, messaging and programming services. Intuitive graphical user interface allows customers to program their own home rules without any previous programming experience.



→ 01

SECURITY AND SAFETY

- unlimited number of virtual alarms (partitions)
- up to 233 two-way, wireless zones
- trigger alarms in case of:
 - ☐ intruder (motion sensors and door/window sensors),
 - ☐ fire (smoke sensors),
 - ☐ flood (water leakage sensors),
 - ☐ gas (CO sensors)
 - ☐ panic button,
 - ☐ duress (if someone force you to disarm your system)
 - ☐ health care (in case of missing actions during particular time e.g. motion, door opening, laying on bed...)
- remote arm/disarm and status-info with any smartphone
- vandal proof - Zipabox is 24/7 monitored by central station which triggers alarm in case of connection loss
- include arm/disarm commands in automation scenes
- integration with existing alarm systems (DSC, Honeywell...)
- easy online setup and configuration through web based interface
- use of same sensors for security and automation purposes



→ 02

LIGHTING

- easy installation of wireless modules
 - Z-Wave and ZigBee lighting modules pre-configured for even easier setup
 - support remote dimming and on/off switching with any smartphone
 - automatically turn lights on at sunset and off at sunrise
 - unlimited number of scenes supported
 - turn lights on during emergencies
 - advanced event based rules configuration
 - auto-pilot lighting programs to discourage intruders while home is empty
-



→ 03

CLIMATE

- multi-room heating and cooling control with any smartphone
- advanced programming scheduler online, accessible over web browser
- easily create unlimited number of custom zones (thermostats)
- multi-zone humidity control by using standard humidifiers and dehumidifiers
- use Internet weather feeds to program your home climate conditions
- create advanced event based rules to automate home climate based on other

environmental and home events

- include climate control in automation scenes together with alarm, lighting, etc.
 - Notification and automated actions in case of overtemperature events, power outages, and other incidents...
-



→ 04

SUN SHADING

- control blinds, roller-shutters, curtains and pergolas using any smartphone
 - automate motors by using fun and easy programming
 - add your sun shading commands into home scenarios together with lights, climate, alarms...
 - automate your shades to react to outside weather conditions
 - easy installation using pre-configured wireless modules
-



→ 05

IRRIGATION

- control unlimited number of irrigation zones
- use advanced programming options online to setup perfect irrigation process
- automate irrigation system based on Internet weather forecast

- integrate your irrigation scheme together with your complete home automation scenarios
-



→ 06

ACCESS

- remotely lock/unlock your door with any smartphone
 - remotely open/close your garage door or gate over any smartphone
 - get video notification when door is open
 - use RFID tags to open doors and get detailed statistics
 - automate doors/locks using scenarios and event based programming tool
 - trigger automation events when door lock user codes are entered
 - automatically unlock doors in the event of an emergency
-



→ 07

MULTIMEDIA

- remotely control your audio/video equipment with any smartphone
- automatically turn on favorite shows when they air and get alerts
- automatically turn off A/V equipment at pre-set time or when room is unoccupied
- automatically turn on equipment to discourage intruders



→ 08

VIDEO MONITORING

- access live and recorded video via the web and from any smartphone
 - support for most of the available IP cameras – ONVIF support
 - get email and SMS notifications with pictures and live video attached
 - remotely adjust pan-tilt cameras
 - create advanced event based recording and video notification rules
-



→ 09

ENERGY METERING

- real-time monitoring energy consumption and notification right on smartphone
 - compare energy usage and cost with others in the area
 - automatically turn on/off your appliances in accordance with electricity prices
 - see detailed analysis of your energy consumption
 - save energy by automating lights, thermostats, sun shades...
-



TAKE CARE OF YOUR SAFETY

Display extreme caution when using ladders or steps, please follow manufacturer's instructions. Be careful when using hand and power tools and follow the manufacturer's

guidelines when using them. Take care that the correct tools are used. Wear goggles or protective clothing where required.



→ 08

TECHNICAL SUPPORT

→ HAVING TROUBLE INSTALLING YOUR NEW PRODUCT?

Zipato's website contains the latest user documentation and software updates for Zipato products and services.

www.zipato.com

@ CONTACT SUPPORT

E-MAIL: support@zipato.com

(Mon-Fri) 9.00am-05.00pm (CET)

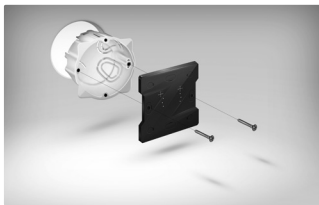
→ PACKAGE CONTENTS



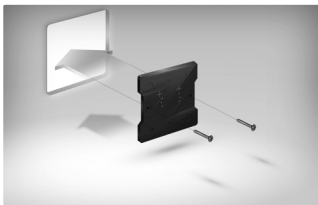
→ WALL MOUNTING HOME TABLET

→ MOUNTING TABLET HOLDER

Using Zipato wall holder will allow you to fix Zipato home tablet to any wall in your home without having any visible charger wires after you finish the installation. No matter you will dedicate one spot for your Zipato home tablet, by using flexible Zipato wall holder, you can easily detach tablet for some other usage and attach it again after usage. Besides converting your Zipato home tablet in a real home control panel, Zipato wall tablet has a radio module inside which allows Zipato home tablet to become a powerful home automation controller even without using Zipabox home automation controller in addition.

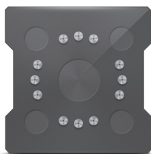


01 Installation with junction box



02 Installation without junction box

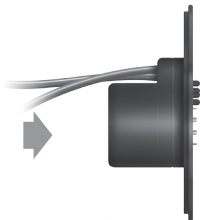
➞ WALL HOLDER OVERVIEW



WALL HOLDER
BACK



WALL HOLDER
FRONT



WALL HOLDER
PROFILE



➔ INSTALLING HOME TABLET ONTO THE WALL HOLDER

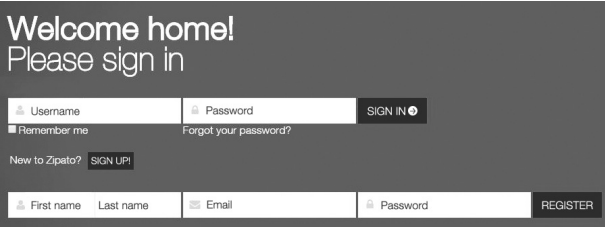


➔ ACCOUNT CREATION AND REGISTRATION

➔ ACCOUNT CREATION

To benefit from the Zipato monitoring and control service you will need to set up your Zipato account and register your Home Tablet. Upon registration you will automatically get the basic free level of monitoring service.

Open a browser window on your computer and go to the following URL: my.zipato.com Click on “Sign Up!” button in the middle of the screen and fill out all required fields that will pop up in the line below the “Sign Up!” button.



The screenshot shows a dark-themed web interface. At the top, it says "Welcome home! Please sign in". Below this are two input fields: "Username" and "Password", each with a small icon to its left. To the right of the "Password" field is a "SIGN IN" button with a right-pointing arrow. Below the "Username" field is a "Remember me" checkbox. Below the "Password" field is a "Forgot your password?" link. Below these is a "New to Zipato?" link followed by a "SIGN UP!" button. At the bottom, there are three input fields: "First name", "Last name", and "Email", each with a small icon to its left. To the right of the "Email" field is a "Password" field with a small icon to its left. To the right of the "Password" field is a "REGISTER" button.

- Fill out empty fields
- Click on “Register”

- Take note of your password during this process.

Once you input registration data and click on register, the following message will pop up:

"Thank you for signing up!

Please check your e-mail for confirmation message."

When this message appears check your email account. If there is no email please check spam container.

Email should look like this:

"Hi, your email here, welcome to the Zipabox!"

To validate your email address please click on the following link verify."

Once email is verified, login to Zipato by filling out credentials.

A screenshot of the Zipato login interface. It features a dark grey background with white text. At the top, it says "Welcome home!" in a large font, followed by "Please sign in" in a slightly smaller font. Below this, there are two input fields: "Username" with a person icon and "Password" with a lock icon. To the right of the password field is a "SIGN IN" button with a right-pointing arrow. Below the username field is a checkbox labeled "Remember me". Below the password field is a link that says "Forgot your password?".

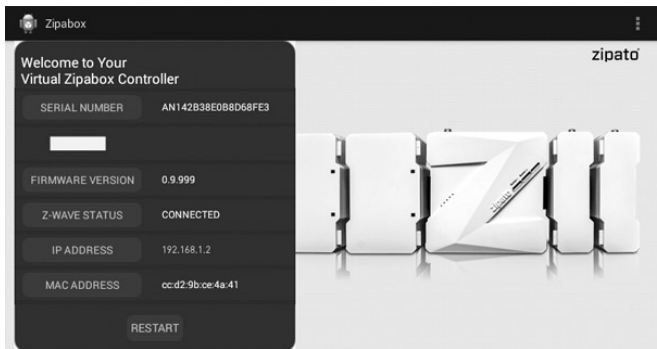
Welcome home!
Please sign in

Username Password **SIGN IN**

☐ Remember me [Forgot your password?](#)

➔ REGISTER YOUR HOME TABLET

When you first time log in to your account, you need to enter serial number of your Zipabox. Serial number is located on back of your Zipabox.



In “Zipabox” application on your Android Zipato controller you will find:

- Serial number
- Indication strip (steady Green strip indication means that controller is online and ready)
- Firmware version which installed on your controller ready)
- IP address
- MAC address



- Enter the serial number shown on “Zipato Client” app
- Serial number must be entered within 2 min. If not, message will appear saying “Allowed registration time elapsed”. This is done because security precaution. If this happens restart Zipabox and reenter serial number.

➔ FINALIZE YOUR ACCOUNT

Your account is set up and you are able to use Zipato cloud system. Anyway, you need to ensure that your account is fully set up so you get the most from your Zipato account. **THIS INCLUDES:** Account Details

Make sure that you have fully completed your profile. Go to “General” options on the left sidebar and select “User details”.

➔ USERS

In the “General” options under the “Users” section is where you add your family members which will have the rights to use your system. Adding a new user requires you to enter new user’s details and to give him/her certain rights. Rights management allows you to permit some services for some users.

➔ ADDING DEVICES

➔ ADDING NEW Z-WAVE DEVICES

Before adding new device, it is recommended to bring device closer to Wall Tablet, so that no obstacle can interfere with operating range of device. Recommended distance between sensors and Wall Tablet is less than one meter. Read device instructions regarding inclusion/join mode. Device in inclusion/join mode is awake and ready for joining in to Zipato network. Always reset device before adding it to the network. Reset deletes any information about prior controller that was stored in device. At the end of joining or removing session it is recommended to refresh Zipato Control Center or wait until number of device is not increased by one to make sure that device is visible in Total device list.

01 | On Zipato dashboard, click “Add device” button in General widget and follow wizard instructions. For Zwave devices, it is recommended that you reset your device before adding it to the Zipato network.

02 | After you successfully add the device in to your Zipato network go to “Total devices” in General widget and set your device’s room name and type. This will help you to control your device easier.

➔ REMOVING DEVICES

To remove device go to Zipato Control Center and click on “Remove device” and follow wizard instructions.

→ SPECIFICATIONS

→ CPU

- Dual core, 1.2 GHz

→ SCREEN

- 7inch Capacitive
(resolution 800x480)
- Multi-touch

→ SYSTEM

- Android 4.4

→ CAMERA

- Front 0.3M

→ RAM

- DDR3 512MB ROM 4GB Flash

→ WIFI

- 802.11b/g/n

→ G-SENSOR

- Yes

→ I/O PORTS

- 1*Mini USB OTG (PC, 3G, U disc, mouse, keyboard)
- 1*3.5MM earphone jack
- 1*DC 5V/2A

→ BATTERY

- 2200 mAh / 3.7V
Lithium Polymer battery

→ VIDEO

- Support 720P/1080P/2160P HD video playing & output

➔ APPLICATIONS

- E-book
- google market
- email
- facebook
- youtube
- 3D games

➔ ACCESSORIES

- Standard Adapter
- USB cable
- user manual
- colorbox



→ LIMITED PRODUCT WARRANTY

→ GENERAL TERMS

Nothing in this Limited Product Warranty affects your statutory rights as a consumer. The Limited Product Warranty set forth below is given by Tri plus grupa d.o.o. (Europe) (herein referred to as "ZIPATO"). This Limited Product Warranty is only effective upon presentation of the proof of purchase. Upon further request by ZIPATO, this warranty card has to be presented, too.

EXCEPT AS EXPRESSLY SET FORTH IN THIS LIMITED WARRANTY, ZIPATO MAKES NO OTHER WARRANTIES, EXPRESS OR IMPLIED, INCLUDING ANY IMPLIED WARRANTIES OF MERCHANTABILITY AND FITNESS FOR A PARTICULAR PURPOSE. ZIPATO EXPRESSLY DISCLAIMS ALL WARRANTIES NOT STATED IN THIS LIMITED WARRANTY. ANY IMPLIED WARRANTIES THAT MAY BE IMPOSED BY LAW ARE LIMITED IN DURATION TO THE LIMITED WARRANTY PERIOD.

TO THE EXTENT ALLOWED BY LOCAL LAW, THE REMEDIES IN THIS WARRANTY STATEMENT ARE CUSTOMER'S SOLE AND EXCLUSIVE REMEDIES AGAINST ZIPATO. THEY DO NOT, HOWEVER, AFFECT OR RESTRICT THE RIGHTS YOU HAVE AGAINST THE BUSINESS YOU BOUGHT A ZIPATO PRODUCT FROM. IN NO EVENT WILL ZIPATO BE LIABLE FOR LOSS OF DATA OR FOR INDIRECT, SPECIAL,

INCIDENTAL, CONSEQUENTIAL (INCLUDING LOST PROFIT OR DATA), OR OTHER DAMAGE, WHETHER BASED IN CONTRACT, TORT, OR OTHERWISE.

HOWEVER, NOTHING IN THIS AGREEMENT LIMITS ZIPATO'S LIABILITY TO YOU (I) IN THE EVENT OF DEATH OR PERSONAL INJURY TO THE EXTENT RESULTING FROM ANY FRAUDULENT MISREPRESENTATION ON THE PART OF ZIPATO, OR (III) TO THE EXTENT ARISING UNDER PART 1 OF THE CONSUMER PROTECTION ACT 1987 OF THE UNITED KINGDOM. SOME STATES OR COUNTRIES DO NOT ALLOW: (1) A DISCLAIMER OF IMPLIED WARRANTIES; (2) A LIMITATION ON HOW LONG AN IMPLIED WARRANTY LASTS OR THE EXCLUSION; OR (3) LIMITATION OF INCIDENTAL OR CONSEQUENTIAL DAMAGES FOR CONSUMER PRODUCTS. IN SUCH STATES OR COUNTRIES, SOME EXCLUSIONS OR LIMITATIONS OF THIS LIMITED WARRANTY MAY NOT APPLY TO YOU. THIS LIMITED WARRANTY GIVES YOU SPECIFIC LEGAL RIGHTS. YOU MAY ALSO HAVE OTHER RIGHTS THAT MAY VARY FROM STATE TO STATE OR FROM COUNTRY TO COUNTRY. YOU ARE ADVISED TO CONSULT APPLICABLE STATE OR COUNTRY LAWS FOR A FULL DETERMINATION OF YOUR RIGHTS.

This Limited Product Warranty applies to ZIPATO branded hardware products (collectively referred to as "ZIPATO Hardware Products") sold by ZIPATO (Europe), its European subsidiaries, affiliates, authorized resellers, or country distributors (collectively referred to as "ZIPATO Resellers") with this Limited Product Warranty. The term "ZIPATO Hardware Product" is limited to the hardware components and all its internal components including firmware. The term "ZIPATO Hardware Product" DOES NOT include any software applications or programs.

➔ GEOGRAPHICAL SCOPE OF THE LIMITED PRODUCT WARRANTY

This Limited Product Warranty is applicable to Hardware Products sold by Zipato Resellers in all countries listed at the beginning of this document under the heading “Countries in which this ZIPATO Limited Product Warranty applies”. The Limited Product Warranty will be honored in any country where ZIPATO or its authorized service providers offer warranty service subject to the terms and conditions set forth in this Limited Product Warranty. However, warranty service availability and response times may vary from country to country and may also be subject to registration requirements.

➔ LIMITATION OF PRODUCT WARRANTY

ZIPATO warrants that the products described below under normal use are free from material defects in materials and workmanship during the Limited Product Warranty Period set forth below (“Limited Product Warranty Period”), if the product is used and serviced in accordance with the user manual and other documentation provided to the purchaser at the time of purchase (or as amended from time to time). ZIPATO does not warrant that the products will operate uninterrupted or error-free or that all deficiencies, errors, defects or non-conformities will be corrected. This warranty shall not apply to problems resulting from: (a) unauthorized alterations or attachments; (b) negligence, abuse or misuse, including failure to operate the product in accordance with specifications or interface requirements; (c) improper handling; (d) failure of goods or services not obtained from ZIPATO or not subject to a then-effective ZIPATO warranty or maintenance agreement; (e) improper use or storage; or (f) fire, water, acts of God or other catastrophic events. This warranty shall also not apply to any particular

product if any ZIPATO serial number has been removed or defaced in any way. ZIPATO IS NOT RESPONSIBLE FOR DAMAGE THAT OCCURS AS A RESULT OF YOUR FAILURE TO FOLLOW THE INSTRUCTIONS FOR THE ZIPATO HARDWARE PRODUCT.

➔ LIMITED PRODUCT WARRANTY PERIOD

The Limited Product Warranty Period starts on the date of purchase from ZIPATO. Your dated sales or delivery receipt, showing the date of purchase of the product, is your proof of the purchase date. You may be required to provide proof of purchase as a condition of receiving warranty service. You are entitled to warranty service according to the terms and conditions of this document if a repair to your ZIPATO branded hardware is required within the Limited Product Warranty Period. [Other than in respect of products for domestic use (in particular those listed in the first and last boxes in the table below), this Limited Product Warranty extends only to the original end user purchaser of this ZIPATO Hardware Product and is not transferable to anyone who obtains ownership of the ZIPATO Hardware Product from the original end-user purchaser.

➔ PRODUCT WARRANTY PERIOD TABLE

PRODUCT TYPE	Zipato Home Tablet 7"
PRODUCT WARRANTY PERIOD	One (1) year* * Battery warranty period is 3 months

IMPORTANT: The content of "Product Type" listed above is subject to change; please refer to the www.zipato.com for latest update.

➔ PERFORMANCE OF THE LIMITED PRODUCT WARRANTY

If a product defect occurs, ZIPATO's sole obligation shall be to repair or replace any defective Zipato Hardware Product free of charge provided it is returned to an Authorized ZIPATO Service Centre during the Limited Warranty Period. Such repair or replacement will be rendered by ZIPATO at an Authorized ZIPATO Service Centre. All component parts or hardware products that are replaced under this Limited Product Warranty become the property of ZIPATO. The replacement part or product takes on the remaining Limited Warranty Period of the replaced part or product. The replacement product need not be new or of an identical make, model or part; ZIPATO may in its discretion replace the defective product (or any part thereof) with any reconditioned equivalent (or superior) product in all material respects to the defective product.

WARRANTOR

Tri plus grupa d.o.o.
Banjaveciceva 11
10 000 Zagreb
CROATIA

TEL +385 (0)1 4004 404
FAX +385 (0)1 4004 405

→ DECLARATION OF CONFORMITY

The Manufacturer Tri plus grupa d.o.o. hereby declares that the product:
Zipato Wall Tablet 7" (zipawtab7)



In accordance with the following Directive(s): 2006/95/EC The Low Voltage Directive, 89/336/EEC The Electromagnetic Compatibility Directive and 1999/5/EC R&TT EC Directive is in conformity with the applicable requirements of the following documents:

EN 300 220-1	EN 301 489-3
EN 300 220-2	EN 301 489-17
EN 300 328	EN 50130-4
EN 301 489-1	EN 60950-1

I hereby declare that the equipment named above has been designed to comply with the relevant sections of the above referenced specifications. The unit complies with all applicable Essential Requirements of the Directives.

PERSON RESPONSIBLE FOR THIS DECLARATION:

Dean Janacek, Certification Manager

Changes or modifications not expressly approved Tri plus grupa d.o.o. for compliance could void the user's authority to operate the equipment.



This device complies with Part 15 of the FCC Rules. Operation is subject to the following two conditions:

- (1) this device may not cause harmful interference, and
 - (2) this device must accept any interference received, including interference that may cause undesired operation.
-

Le présent appareil est conforme aux CNR d'Industrie Canada applicables aux appareils radio exempts de licence. L'exploitation est autorisée aux deux conditions suivantes :

- (1) l'appareil ne doit pas produire de brouillage, et
 - (2) l'utilisateur de l'appareil doit accepter tout brouillage radioélectrique subi, même si le brouillage est susceptible d'en compromettre le fonctionnement.
-

NOTE: Changes or modifications not expressly approved by Zipato for compliance could void the user's authority to operate the equipment. This equipment has been tested and found to comply with the limits for a Class B digital device, pursuant to Part 15 of the FCC Rules. These limits are designed to provide reasonable protection against harmful interference in a residential installation. This equipment

generates, uses and can radiate radio frequency energy and, if not installed and used in accordance with the instructions, may cause harmful interference to radio communications. However, there is no guarantee that interference will not occur in a particular installation.

If this equipment does cause harmful interference to radio or television reception, which can be determined by turning the equipment off and on, the user is encouraged to try to correct the interference by one or more of the following measures:

- Reorient or relocate the receiving antenna.
- Increase the separation between the equipment and receiver.
- Connect the equipment into an outlet on a circuit different from that to which the receiver is connected.

➔ DISPOSING AND RECYCLING YOUR PRODUCT



This symbol on the product or packaging means that according to local laws and regulations needs to be disposed of separately from household waste and sent to recycling because it contains electronic components and a battery. Once this product has reached the end of its life, please take it to a collection point (recycle facilities) designated by your local authorities, some will accept your product for free or simply drop it off at your Zipato re-seller store. By recycling the product and its packaging in this manner you help to conserve the environment and protect human health. At Zipato, we understand and are committed to reducing any impact our operations and products may have on the environment. To minimize this impact Zipato designs and builds its products to be as environmentally friendly as possible, by using recyclable, low toxic materials in both products and packaging.

make your home smart

www.zipato.com