

zipato®

# HOME AUTOMATION

Security

Energy

Comfort

Safety



# WHAT IS ZIPATO

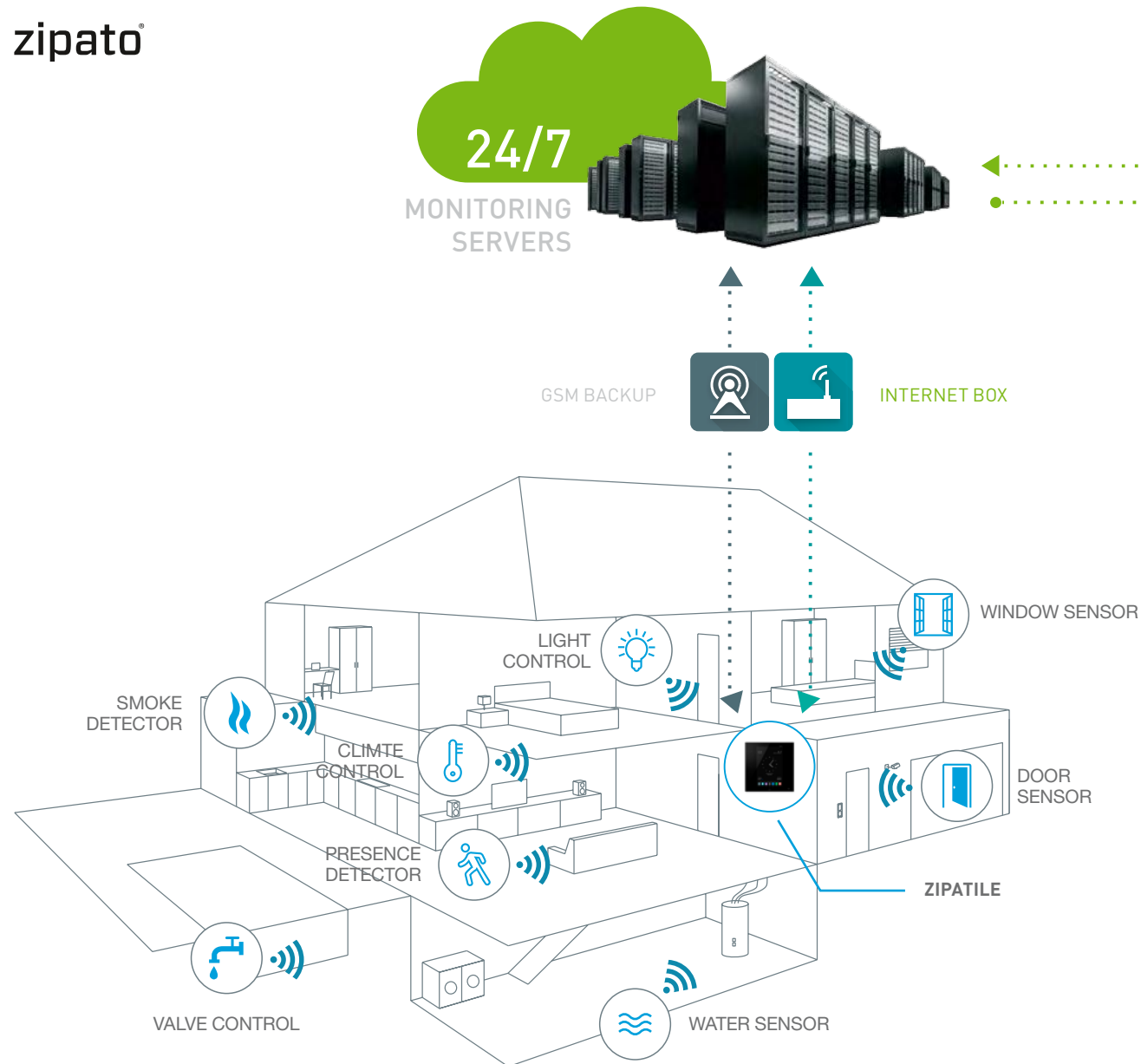
Zipato is an interactive security and automation system based on cloud technology. You can control, customize, and automate all the powered devices in your home, watch live video from your security cameras, and get instant alerts in case of any security issue.

Zipato is the next generation security solution for your home and family, providing you with extensive monitoring and alerting services in case of fire, burglary, flood or gas leakage, as well as custom child and senior care solutions. Zipato will also let you save energy by monitoring your energy consumption, allowing you to remotely control and automate lights, temperature and all other powered devices in your home. Custom reports and alerts will help you understand where your energy goes and stop wasting it when you don't need it. Such a high level of security and energy efficiency together with ability to fully control and automate your complete home over Internet or mobile phone will make your home much more comfortable and let you have peace of mind when you are away.



zipato®

# HOW IT WORKS



## ALERTING 24/7 YOU WILL NEVER MISS ANYTHING



MAIL



SMS



PHONE



POLICE



FIRE  
DEPARTMENT



MEDICAL  
HELP



SECURITY



OWNER

Zipato monitoring station provides 24-hour MAIL, SMS or PHONE alerting service to anyone you want.

## CONTROL YOUR HOME ANYTIME, FROM ANYWHERE IN THE WORLD



From almost anywhere on the road, your office or the beach, you can keep track of your home easily. Zipato service is accessible through multiple user-friendly interfaces including mobile phones, Web browsers and tablets.





# ZIPATILE

## ALL IN ONE

ZipaTile is the complete home control system in a form of a single device. It can be easily mounted on any wall, in any home. Featuring large number of built-in sensors and hardware modules, ZipaTile will replace numerous home devices such as security system, thermostat, automatic controller, IP camera, alarm siren or intercom, and bring them together in one, smart and beautiful device.







# SECURITY

ZipaTile is a complete security system in a single device. Besides being security control panel itself, it has also motion detector, noise sensor, shock sensor and a siren integrated inside. Furthermore, it is constantly supervised by 24/7 free monitoring station, which will alert you in case of any incident. Also it has a built in IP camera, which will send you a photo or a video, in order to provide more reliable info about the incident. ZipaTile can be further expanded by using many additional sensors which are communicating through some of supported protocols.



Motion sensor



Noise sensor



Shock sensor



Remote control



Alarm siren



Battery backup



IP camera

Supports **SIA** protocol

# VIDEO MONITORING

Zipatile can discover most of available IP cameras in your network. This allows you to see what's happening in your home, even if you are away of home. Just connect to your Zipatile with Zipato mobile app. Furthermore, you can set you Zipatile to send you a photos or video clips whenever some event occurs in your home. This way you will keep in touch with your home even when you are away.



Motion recording



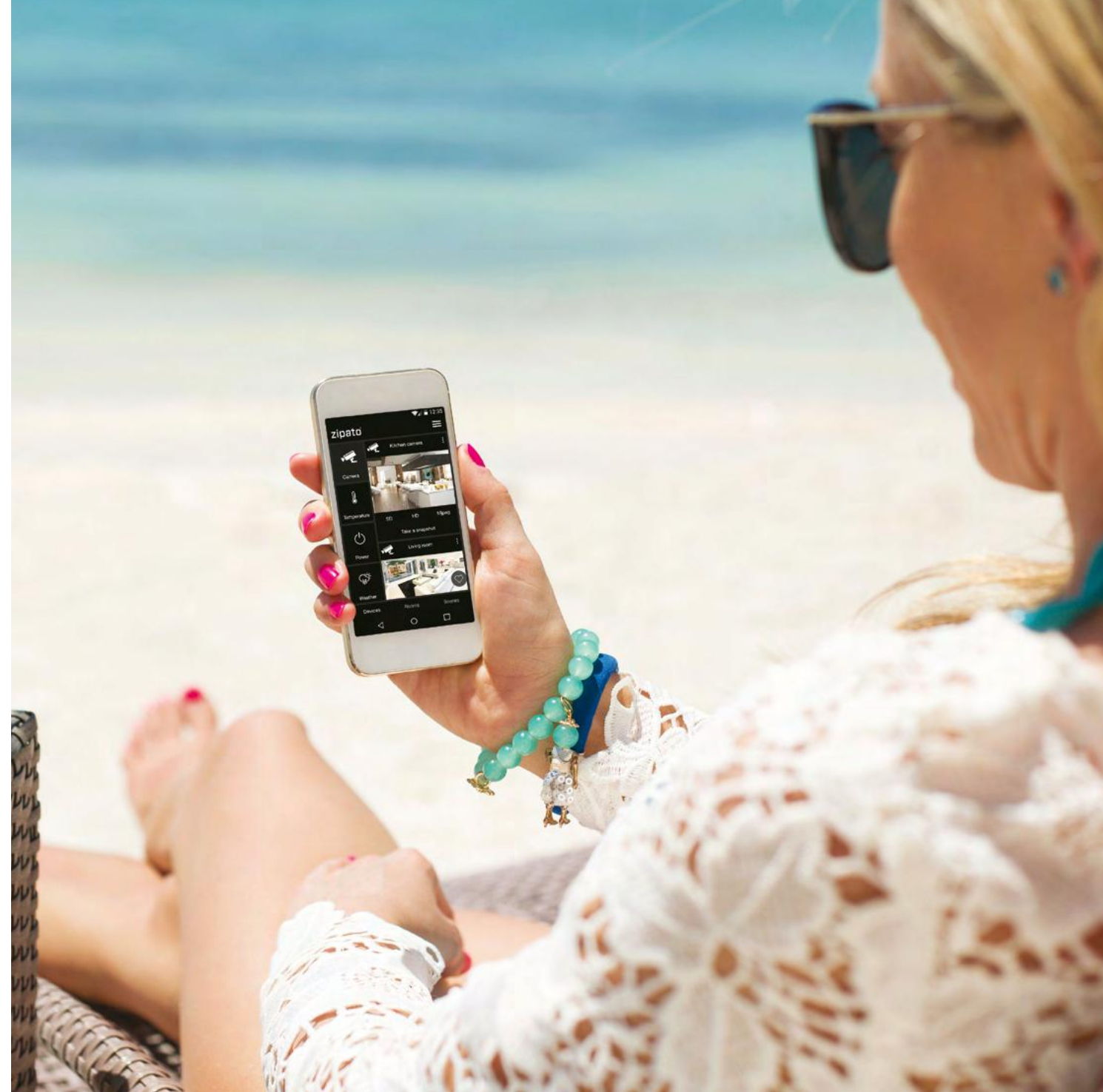
Alert messages



Remote control



Scheduled recording







## SAFETY

ZipaTile comes with the special noise sensor which can detect safety alarms produced by standard smoke, gas or fire sensors. In case of such an alarm, ZipaTile will forward this information to Zipato server which will immediately send an alert message to you or anyone else. Furthermore, you can connect additional sensors to your Zipatile as well. It will manage them all together.



Noise sensor (detects smoke, gas, fire)



Alert messages



Remote control



# ELDERLY CARE

Besides for intruder detection and safety alarm, ZipaTile has built in a special logic, in order to be used as an activity alarm for Elderly care. Once activated, ZipaTile will trigger an alarm whenever there is no motion or some other activity for the certain period of time. Possibility to connect additional sensors will help you to create complete elderly care system if needed.



Activity alarm



Sound sensor



Remote control



Alert messages



Video streaming



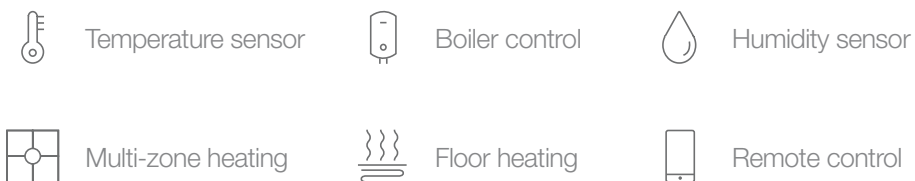
Panic button





# SMART THERMOSTAT

ZipaTile can be used as a fully featured Smart Thermostat. It has 4 modes of temperature settings, relays for boiler control, and floor heating valve, as well as connector for external temperature sensor. Furthermore, it is completely accessible remotely from any smart phone. Also you can connect additional thermostatic valves, switches and temperature meters to get complete multi room heating/cooling system.



# INTERCOM

You can use your ZipaTile as an internal door phone station with most of SIP based outdoor door phone units. Supported by the Zipato server, ZipaTile will forward any call from the outdoor unit to your mobile phone wherever you are, or you can just use ZipaTile to answer the call. Furthermore, if you have more than one ZipaTile in your home, you can use them for fast and easy communication between rooms. Also, ZipaTile SIP server is integrated with Zipato system, so you can create various automation rules within Zipato Rule Creator, based on SIP server events.



Calls



Automation rules



Phone forwarding



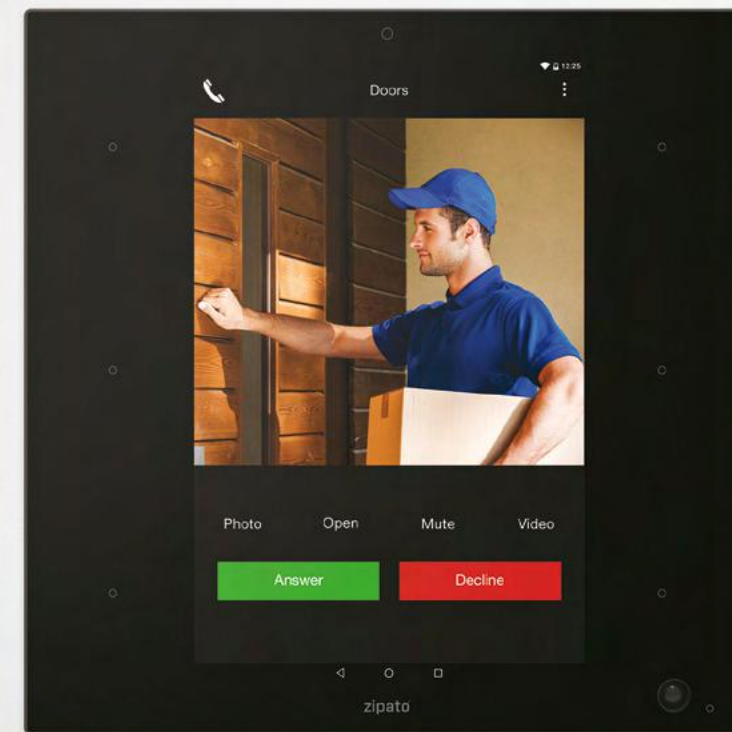
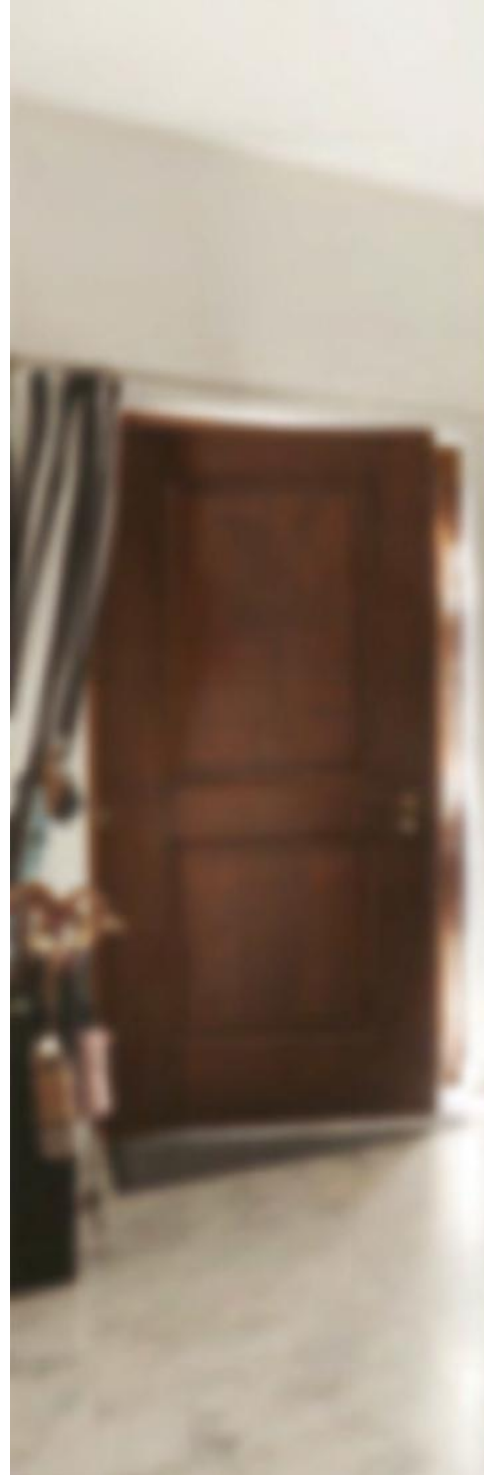
Video support



Multi-room communication



SIP







# CONTROL PANEL

ZipaTile provides the most convenient way to control any home. Besides HD touch screen with beautiful control applications, ZipaTile has 6 buttons and each button has 3 input types (touch, double touch and touch and hold). Of course, buttons are active no matter whether the screen is ON or OFF.

Even more interesting control input are GESTURES. While screen is off, ZipaTile will recognize up to 50 gestures which you can program by using Zipato rule creator or even easier in app settings in Zipato application.



Scene buttons



Gestures



Multimedia control



Android applications

# INFO PANEL

Featuring 8" IPS HD display, constant internet connection and Android 5.0 operation system, ZipaTile will stand for an amazing information panel on your wall. You can check the internal temperature and humidity, as well as outdoor environmental conditions, news, stocks, tasks and various different informations. Additionally, ZipaTile comes with the Zipato home control application which allows you to control all your lighting, sun shading, scenes etc...



Weather forecast



Calendar



Room temperature



Photo frame



News



Humidity





## GATEWAY

Depends of which model of ZipaTile you have, you can connect various devices by using various communication protocols, and automate them by using Zipato automation tools or just control them from your mobile phone no matter where you are. Please check the technical specification of you ZipaTile to learn which network modules are integrated inside.

### CONNECTING



## SONOS



# REMOTE CONTROL

Download Zipato app from Apple Store or Google Play Store, and control your ZipaTile from anywhere in the world. Through ZipaTile you can also control any other device in your home which is connected to ZipaTile (lights, looks, heating, sun shading, cooling...)

AVAILABLE ON:



Mac



PC



Mobile





# AUTOMATION

Put your home on auto-pilot to discourage intruders. Use Scene buttons to activate multiple devices at once, or Scheduler to schedule certain automatic events.



Scenes



Online tool



Event triggers



Remote control



# RULE CREATOR

Online tool with which you can add or change something in you configuration whenever you want and from anywhere In the world. Intuitive graphical programming tool eliminates the need for complex programming or cryptic computer code. No programing skills required. You can practically play with your home.



Remote control



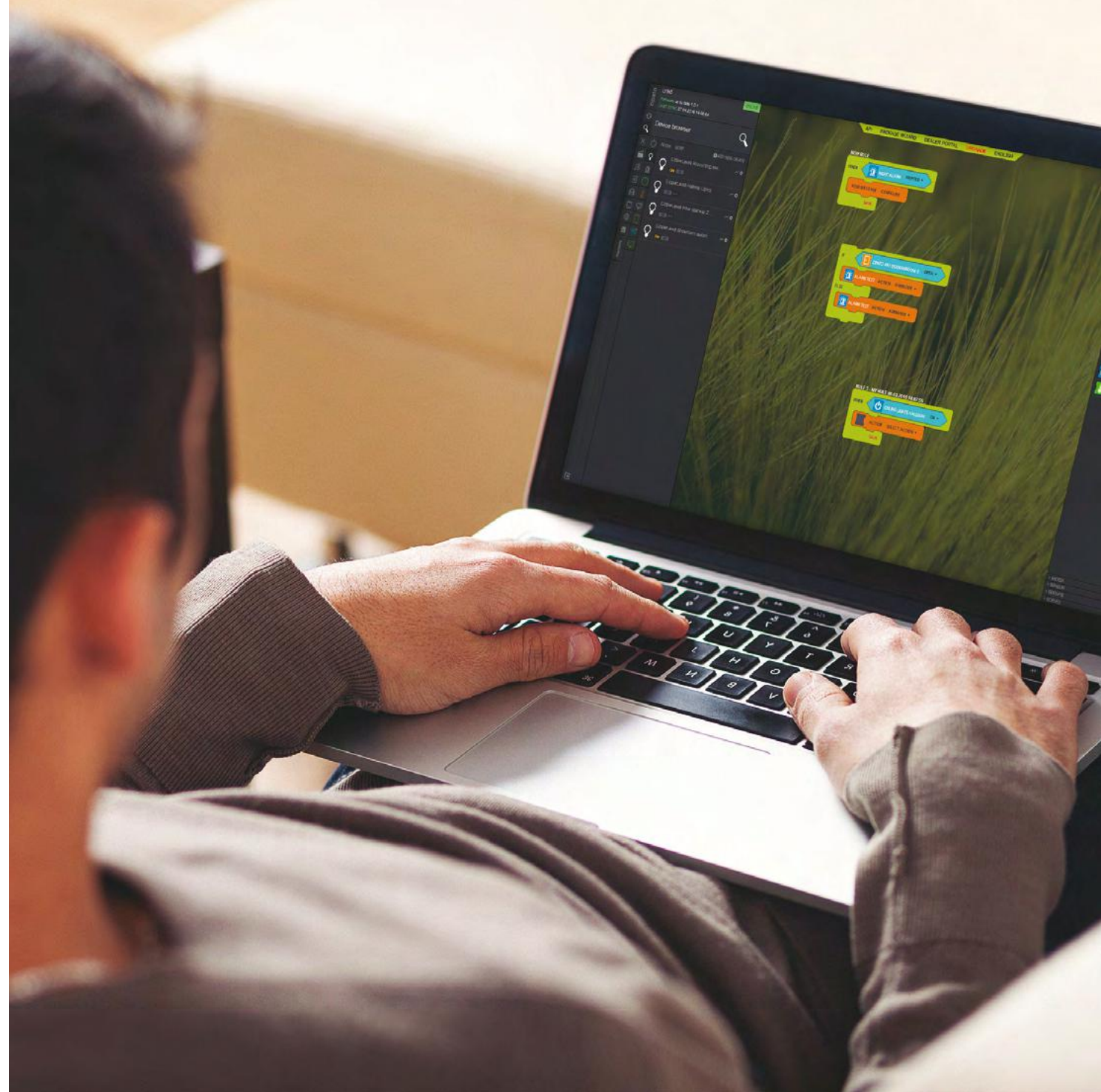
Notifications



Event actions



No programming skills required







# SPECIFICATION

## APPLICATIONS

- Security System
- Thermostat
- Elderly Care System
- Home Automation
- Video Monitoring
- Intercom
- Room Controller

## SYSTEM

- Cortex-A9, 4 cores 1.6GHz CPU
- 1024MB RAM
- 8192MB FLASH
- Android 5 Lollipop

## NETWORK

- Wi-Fi 802.11 b/g/n
- Ethernet (with optional adapter)
- Bluetooth 4.0
- Philips Hue
- Sonos
- Nest
- Z-wave plus (500 series)
- ZigBee HA

## SENSORS

- Noise
- Light
- Humidity
- Temperature
- Motion
- Shock

## INPUT/OUTPUT

- Touch sensitive 8" screen, 800x1280 px
- 6 programmable scene buttons
- Dual dry output 230VAC, 1A (EU: 2x; US: 3x)
- Dry input 12-24VDC (only EU version)

- External temperature sensor (1-Wire DS18B20)
- 2MP video camera
- Multi-sound alarm siren
- SD card
- Speaker 8Ω/1.5W
- Microphone

## POWER

- Power input: 5VDC
- Power supply input: 100-240VAC, 50/60Hz
- Power usage: <2W (Idle), 7W (Max.)
- Backup battery: Li-Ion 3.7V 2000mAh

## ACCESSORIES

- In-wall power supply
- Wall socket adapter
- Wall holder
- Screws
- Table stand

## PHYSICAL DIMENSION

- 205(W) x 205(H) x 14(D) millimeters

## WEIGHT

- 584g (20.6oz)

## ENVIRONMENTAL

- Operating temperature: 0°C to 40°C (32°F to 104°F)
- Storage temperature: -25°C to 70°C (-13°F to 158°F)
- Humidity: 5% to 95% non-condensing

## REGULATION

- Safety: UL power supply
- CE, FCC, IC
- RoHS, REACH

## WARRANTY

- 1 year standard



Leonardo Da Vinci

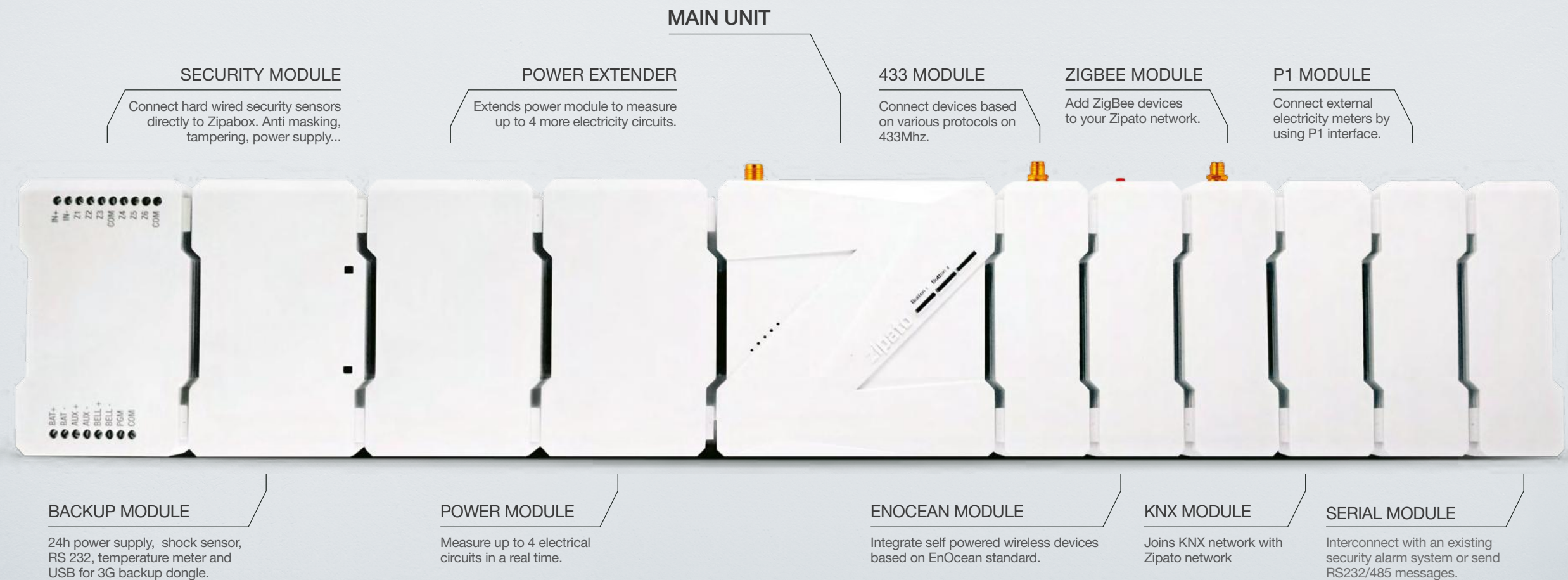
“SIMPLICITY IS THE  
ULTIMATE  
SOPHISTICATION”



# ZIPABOX

## MODULAR CONTROLLER

Supporting the most commonly found protocols in home and building automation systems today (i.e. Zig Bee, ZWave, KNX, Zipabox connects hundreds of various automation devices available on the market joining them into a single Zipato network.







## SECURITY MODULE

Connecting wired security sensors to the Security Module makes Zipabox one of the most advanced wired security panels on the market. Robust wired installation combined with advanced Zipabox logic possibilities provides perfectly secure and comfortable environment in any building. Low price and high reliability of wired sensors, gives an excellent opportunity for installing Zipato in the new homes. 6 on-board zone inputs, siren output and input, PGM output and lead acid battery charger, allows you to either replace your existing alarm panel with Zipabox, or use your existing alarm panel alongside Zipabox, sharing sensors or sirens, in any conceivable combination.



## POWER MODULE

Connecting wired security sensors to the Security Module makes Zipabox one of the most advanced wired security panels on the market. Robust wired installation combined with advanced Zipabox logic possibilities provides perfectly secure and comfortable environment in any building. Low price and high reliability of wired sensors, gives an excellent opportunity for installing Zipato in the new homes. 6 on-board zone inputs, siren output and input, PGM output and lead acid battery charger, allows you to either replace your existing alarm panel with Zipabox, or use your existing alarm panel alongside Zipabox, sharing sensors or sirens, in any conceivable combination.

## BACKUP MODULE

Most important benefit of a connected home is increased home security. Main issue with any home security system is power autonomy in case of power outage and backup Internet connection in case main connection is cut off. Security expansion module ensures Zipabox stays powered on in case of power outage and provide customers with convenient way to setup a 3G backup connection by just plugging in 3G USB stick. As most operators offer special discounts for M2M service, this is considered as most cost-effective way to setup security backup connection.



## POWER EXTENDER

Beside being DIN-RAIL mounted power supply for the Zipabox main unit, Power module determines electricity consumption from a current clamp attached to one of the power cables. Up to 4 current clamps can be connected directly to the the Power module, and up to 16 more can be connected by using add-on modules. All the measurements are available on the cloud server where customers can visualize and analyze their energy consumption when ever they want. Most important, customers can use real time measurements to create their own energy saving rules by using Zipato Rule Creator, breakthrough graphical automation interface.





## 433MHZ MODULE

By using the 433MHz expansion module, Zipabox allows you to, not just to connect vast majority of the popular protocols based on 433Mhz to work together, but also, to connect them all together to work within a same network with Z-wave, Zigbee and KNX devices. This option allows installers and home owners to optimize the automation installations in order to get best value for money, which seems to be the “holy grail” of the home automation market for while.

## ENOCLEAN MODULE

EnOcean-based products (such as sensors and, switches) perform without batteries and are engineered to operate maintenance-free.

Users will benefit from a new level of flexibility when installing or expanding their individual intelligent home system. With Zipabox integrating the EnOcean standard, they can now choose one of the most established wireless standards for building automation – free from the maintenance-effort of changing batteries.





## ZIGBEE MODULE

ZigBee expansion module allows Zipabox to communicate with all ZigBee enabled devices and integrate them into one unified home automation network. Since majority of smart energy meters supports ZigBee, Zipabox becomes even more interested for consumers, telcos and utilities to integrate smart metering applications within connected home.



## P1 MODULE

By using P1 expansion module, Zipabox can interconnect with an existing electricity meter which supports P1 standard.

## KNX MODULE

KNX module allows connecting Zipato network to KNX by the KNX Serial BAOS 820 module (BAOS stands for “Bus Access and ObjectServer”). In addition to the KNX transceiver, it contains a microcontroller with a certified KNX stack. It also electrically isolates the device from the bus.

Once connected to KNX network Zipabox will allow users to remotely manage devices within a KNX network, add logical rules by using Zipato Rule Creator and to control other IP, Z-wave, X10, Zigbee and other devices from within a KNX network.



## SERIAL MODULE

By using Serial expansion module, Zipabox can easily interconnect with an existing security alarm system, such as DSC or PARADOX, or any other system which has an RS232 or RS485 communication interface (e.g. air condition). Number of external systems supported by Zipato is increasing all the time, and Zipato providing an SDK to all the parties interested in supporting various protocols.







CONNECT EVERYTHING





# ACCESSORIES







## MULTISENSOR DUO

Presence detector and temperature meter in one device. Zipato Multisensor Duo offers elaborate security and ambient sensing options. Multifunctional nature of this product allows you to detect motion, and measure room's temperature. When used with Zipato home automation controllers it can be part of any automation scenario created using Zipato Rule Creator. Accordingly it can be used to automatically trigger other Z-Wave devices when activated.

- Motion and temperature sensors in one device
- New Z-Wave 500 series chip supports multichannel operation and higher data rates (9.6/40/100kbps)
- Can be used with various Z-Wave networks/controllers, regardless of the manufacturers
- Very low power power consumption
- Low battery auto report
- LED indicator
- Over-the-air firmware update
- Easy installation



## DOOR/WINDOW SENSOR

Zipato's Door/Window Sensor consists of sensor and a magnet. One piece mounts on the door/window frame, and the other mounts on the door/window itself. When the two components separate, sensor reports that door/window is open. When used with Zipato home automation controllers it can be part of any automation scenario created using Zipato Rule Creator. It can be used either to detect intruders or to automatically trigger other Z-Wave devices when activated. Like all Z-Wave devices displaying the Z-Wave logo, Zipato Door/Window Sensor can also be used with various Z-Wave networks and controllers, regardless of the manufacturer.

- Door/Windows sensor that can be mounted to any door window or other opening object
- New Z-Wave 500 series chip supports multichannel operation and higher data rates (9.6/40/100kbps)
- Can be used with various Z-Wave networks/controllers, regardless of the manufacturers
- Very low power power consumption
- Low battery auto report
- LED indicator
- Over-the-air firmware update
- Easy installation

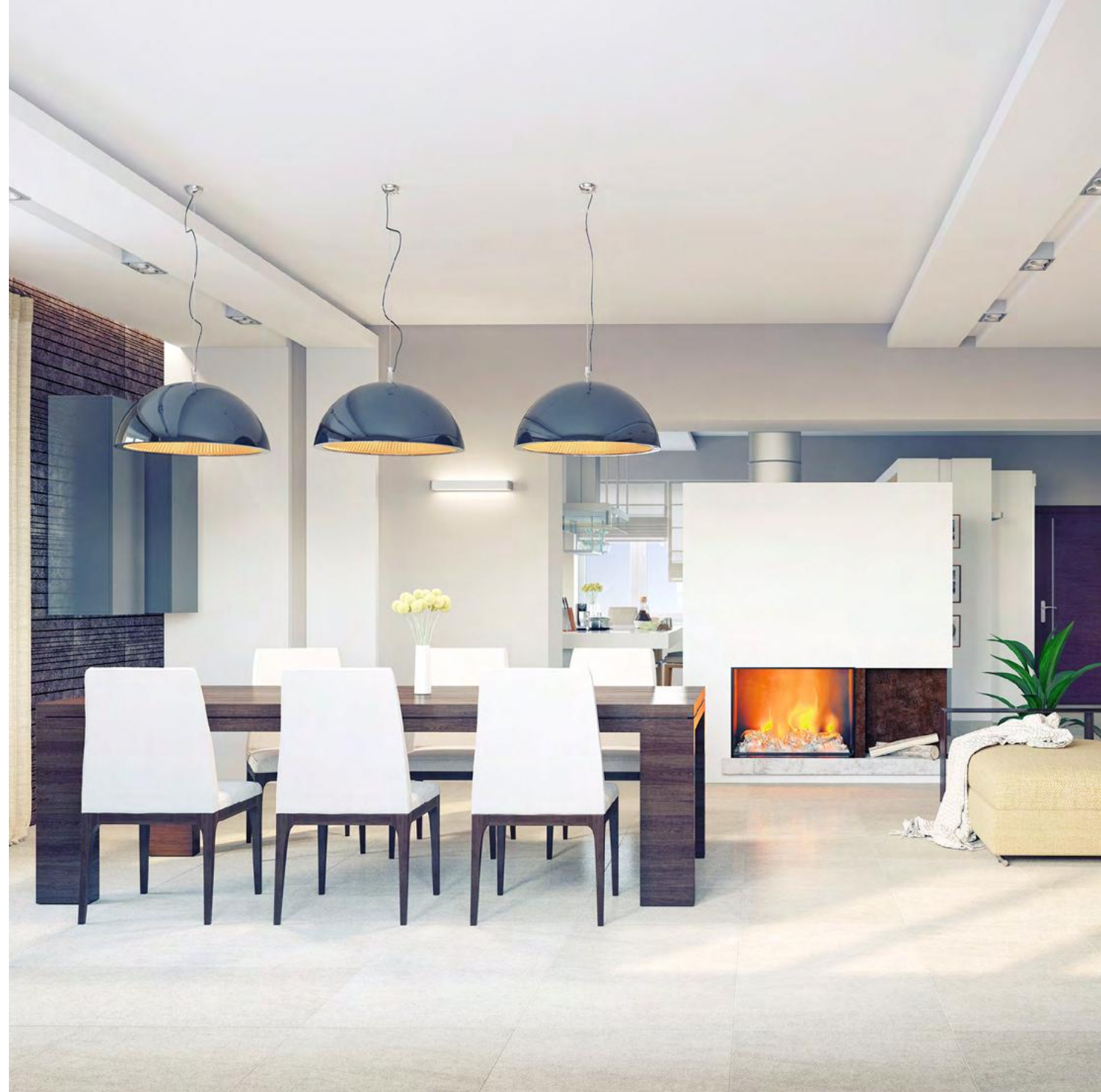




# MULTISENSOR TRIO

Temperature, illuminance and door/window sensor in one, single device. Zipato Multisensor Trio offers elaborate security and ambient sensing options. Multifunctional nature of this product allows you to monitor opened/closed status of any opening object, measure room's ambient temperature and light intensity. When used with Zipato home automation controllers it can be part of any automation scenario created using Zipato Rule Creator.

- Door/Window, temperature and illuminance sensor in one device
- Primarily used as Door/Window sensor, it consists of two parts, magnet and a sensor
- Door/Window status and battery status auto-report
- Tamper proof protection
- Door/Window status and battery status auto-report
- LED indicator
- Over-the-air firmware update
- Easy installation
- Very low power consumption





## MULTISENSOR QUAD

Presence, temperature, illuminance and door/window sensor in one, single device. Zipato Multisensor Quad offers elaborate security and ambient sensing options. Multifunctional nature of this product allows you to detect motion, monitor opened/closed status of any opening object, measure room's ambient temperature and light intensity. When used with Zipato home automation controllers it can be part of any automation scenario created using Zipato Rule Creator.

- Door/Window, motion, temperature and illuminance sensor in one device
- Primarily used as Door/Window sensor, it consists of two parts, magnet and a sensor
- Door/Window status and battery status auto-report
- Tamper proof protection
- Door/Window status and battery status auto-report
- LED indicator
- Over-the-air firmware update
- Easy installation
- Very low power consumption



## 3 IN 1 FLOOD MULTISENSOR

Zipato Flood Multisensor 3 in 1 integrates flood, temperature and humidity sensors in one device, connected to your Z-Wave network of choice. This device offers elaborate safety and ambient sensing options. Multifunctional nature of this product allows you to be informed about water leakages and potential flood disasters, as well as to measure temperature and humidity levels.

- Flood, temperature, humidity sensors integrated in one device
- New Z-Wave 500 series chip brings better RF range indoors and up to 100 Kbps transmission speeds
- High sensitive linear flood detector
- Mounting can be done with tape or screws (included in the box)
- Tamper proof protection
- Extremely low power consumption, 7 years battery lifespan
- Over-the-air firmware update
- Slim, elegant design
- Very low power consumption





## MULTISENSOR 4 IN 1

Door/Window, humidity, temperature meter, illuminance meter in one device. Zipato Multisensor 4 in 1 offers elaborate security and ambient sensing options. Multifunctional nature of this product allows you to monitor opened/closed status of any opening object, measure humidity levels, room's ambient temperature and light intensity. Primarily intended for use as a door/window sensor, Multisensor 4 in 1 consists of sensor and a magnet.

- Door/Window, humidity, temperature and illuminance sensor in one device
- New Z-Wave 500 series chip supports multichannel operation and higher data rates (9.6/40/100kbps)
- Can be used with various Z-Wave networks/controllers, regardless of the manufacturers
- Door/Window status and battery status auto-report
- LED indicator
- Over-the-air firmware update
- Easy installation
- Very low power consumption



## MINI RFID READER

Zipato Mini RFID Keypad combines RFID and Z-Wave protocol for access control purposes. The user can identify themselves either by using manual code buttons on the numeric keypad, or by using a RFID key fob. The keypad fully supports Zipato automated security systems but also works with other Z-Wave enabled networks. “Home” and “Away” buttons allow the arming and disarming of security system or running any automation scenario. 1 RFID tag included, up to 20 codes supported.

- Arms or disarms security system
- User identification over numeric keypad or RFID key fobs (2 included)
- Can be used with any Z-Wave network/controller, regardless of the manufacturer
- Very low power consumption
- Low power indication
- Low battery auto report
- Easy installation and relocation



## SMOKE DETECTOR

Zipato Smoke Sensor (Z-Wave) is designed to give early warning of developing fires by giving off the alarm sounds from its built-in alarm horn, based on Z-Wave technology. Zipato Smoke Sensor is Z-Wave Plus(tm) product, it supports security, OTA and all other new features of 500 Series Z-Wave chipset. This product can be included and operated in any Z-Wave network with other Z-Wave certified devices from other manufacturers and/or other applications.

- New Z-Wave 500 series chip supports multichannel operation and higher data rates (9.6/40/100kbps)
- Sound and Z-Wave alerts on smoke detection
- Built-in sound alarm
- Higher output power enhances communication range(+5dBm output power as compared to -2.5dBm 300 series)
- Low power consumption
- Low battery auto report
- Removable ceiling bracket





## MULTISOUND SIREN

Zipato Multisound indoor siren is Z-Wave enabled siren that can be used as a part of any Z-Wave enabled network. It is perfect as an addition to your Zipato network, where it can be combined with other devices in the network in order to provide elaborate security features. Additionally, this siren can be part of virtually limitless security automation scenarios you can create by using Zipato Rule Creator.

- Indoor multichannel siren that works with variety of Z-Wave networks/controllers, regardless of the manufacturer
- 110db sound level
- 6 sounds: Door Chime, Bi Bi Arm/Disarm, Intruder alarm, Ambulance, Police car
- DC or Li-ion battery power (over 24 hours battery life)
- Battery over-discharge protection
- Very low power consumption
- Over-the-air firmware update
- Tamper-proof protection





## 3G USB STICK

A 3G USB Stick is a portable device that attaches to a USB port (backup module, security module, serial module) to enable a Zipabox to connect to the central monitoring servers as a primary connection or secondary (backup) IP connection by using 3G networks.

Zipato 3G USB Stick can be used with any 2G/ 3G SIM card, wherever Dual Band, Tri Band or Quad Band SIMs are supported. Simply plug into a backup module or security module, set your PIN/APN and connect to the Zipato monitoring servers.

- HSDPA
- GSM/GPRS/EDGE: 900/1800/1900/850MHz
- Chipset: Qualcomm
- USB Stick Micro-SD card slot (up to 32G)
- Linux driver support
- Easy installation



## Z-WAVE REMOTE

Zipato Z-Wave Remote is a simple remote controller that can control your AV devices through Z-Wave-to-IR extender, and via basic set it can also ON/OFF switch 8 lighting groups, based on Z-Wave technology. Zipato Z-Wave Remote is Z-Wave Plus(tm) product, it supports security, OTA and all other new features of 500 Series Z-Wave chipset.

- Controls light groups via basic ON/OFF Z-Wave set
- When used with Z-Wave-to-IR extender, it can control AV equipment
- Long battery life
- Built-in Lithium Polymer Battery rechargeable over Micro-USB port
- Green and red led indicator
- IPX-5 Waterproof
- New Z-Wave 500 series chip supports multichannel operation and higher data rates (9.6/40/100kbps)
- Slim, modern, keyfob design





## IR EXTENDER

Zipato IR Extender is a Z-Wave enabled IR extender that works with Zipato home automation controllers or any other Z-Wave enabled network. It has integrated IR control code library to simplify setup and configuration process. Using it with Zipato controllers and Zipato Rule Creator you can run virtually limitless automation scenarios such as configuring Z-Wave enabled thermostat to automate and remotely control IR enabled air conditioner and many other IR devices.

- Controls IR enabled air conditioners and many other IR devices
- Built-in temperature sensor
- Programmable power level (LOW or HIGH) for external IR emitter to avoid saturation of IR receivers
- Dual mode (FliRS mode when working on battery, Always listening mode when work on AC power)
- Built-in AC IR code library with Configuration Learning capability
- 120-code list provided through Z-Wave configuration commands
- Built-in 5 direction IR emitters and 3.5mm jack for external wired IR emitter



## INDOOR IP CAMERA

This SmartP2P IP Camera combines high definition video camera with wireless and cloud connectivity to bring high definition video of your home whenever you are, on local network or over the Internet, via connected device of your choice (iOS, Android and Windows free apps are available!). As a part of Zipato Smart Monitoring Kit, you can use it to see live and recorded video upon any alarm event, get attached video on alert or always know if your kids are safe.

- Build in WIFI module, 802.11 b/g/n
- Day/Night Surveillance
- Dual Stream, H.264/MJPEG video Compression
- 3.6MM lens, F2.0
- 720p resolution
- Two-way Audio
- Supports ONVIF and RTSP protocol
- SD card socket for recording storage
- Motion Detection alarm via E-Mail, FTP and Micro SD



## OUTDOOR IP CAMERA

Zipato Outdoor IP Camera combines high definition recording with wireless and cloud connectivity to bring HD video of large outdoor areas wherever you are, locally or over the Internet, via connected device of your choice. It is IP66 rated, for dust and rain protection. As a part of Zipato Smart Monitoring Kit, you can use it to see live and recorded video upon any alarm event, get attached video on alerts and many more. Joined in Zipato network, it can be part of virtually limitless automation scenarios you can create by using Zipato Rule Creator.

- 1.0 Mega Pixel lens, f=3.6mm, F=2.0, 1/4" HD sensor
- Day/Night Surveillance, 20m night vision
- Dual Stream, H.264/MJPEG video Compression
- Supports IEEE 802.11n Wireless Connection
- Supports ONVIF and RTSP protocol
- WEP, WPA and WPA2 encryption
- Waterproof IP66 for outdoor use
- Low power consumption





# VALVE CONTROLLER

Heavy-duty automated Valve Controller, that can fit variety of fluid management purposes. When used as a part of Zipato ecosystem, it can cut the water or gas supply when leak is detected. Additionally, using Zipato Rule Creator you can make it part of virtually limitless automation scenarios.

- Robust, sturdy built valve controller ideal for automated irrigation scenarios
- Can be used for automatic control of gas and fluid valves such as water valves
- Cutting the water/gas supply automatically if a leak or flood is detected (if associated with a flood/gas detector)
- Aluminum alloy shell
- Can be controlled via internet enabled devices such as your PC or smartphone
- Manual activation in case of power failure
- Installs on a standard 1/4 turn valve
- Works as Z-Wave signal repeater
- Can be used with various Z-Wave networks/controllers, regardless of the manufacturer





# WIRELESS RADIATOR VALVE

Wireless radiator valve is stand-alone intelligent electronic and programmable radiator thermostat for residential use. Easy to install and very easy to operate with only three buttons, it measures the temperature with two built-in sensors; one behind the display and one near the valve. Based on room's temperature readings, it accurately controls the actual room temperature. When used with Zipato home automation controllers it can be part of any automation scenario created using Zipato Rule Creator.

- Backlit display
- Frost protection
- Child protect
- Minimum/maximum temperature limitation
- Adaptive learning
- Open window function
- Battery lifetime 2 years
- Weekly programs with adjustable temperature set-backs
- Easy installation





## MINI ENERGY DIMMER

Zipato Mini Energy Dimmer provides variable indoor lightning, creating pleasant ambience in your home while helping you reduce overall energy consumption. This Z-Wave enabled module can be set in most existing in-wall switches where it can be used to control connected appliances, with Zipato home automation controllers, Z-Wave remotes or module's built-in push button.

- Slim, compact Z-Wave incandescent dimmer provides variable indoor lightning, switches your lightning equipment and reports their energy consumption
- Designed to dim most fluorescent, tungsten, halogen, sodium and leading edge lights
- Fits into most existing in-wall switches
- Resistive load 1x500W @ 220VAC, 1x300W at 120VAC
- Zero-crossing switch
- Reports immediate voltage, current and energy consumption
- Can act as a repeater in any Z-Wave network
- Very low power consumption
- Easy installation



## MICROMODULE SWITCH SINGLE

Zipato Micromodule Single Switch enables you to control in-wall switch or power outlet with Zipato home automation controllers, any Z-Wave remote or module's built-in push button. This small module installs in the electrical box behind your switch/outlet, and wires in between your switch/outlet and single connected load. When the module is installed, the wall switch no longer directly control the connected load. Instead, switch serve as input for the module, which has an internal relay to control the connected load. This relay transmits commands to your load from the wall switch or a Z-Wave remote.

- Door/Window, motion, temperature and illuminance sensor in one device
- Primarily used as Door/Window sensor, it consists of two parts, magnet and a sensor
- Door/Window status and battery status auto-report
- Tamper proof protection
- Door/Window status and battery status auto-report
- LED indicator
- Over-the-air firmware update
- Easy installation
- Very low power consumption



# MICROMODULE ROLLER SHUTTER

Zipato Micromodule Motor Controller enables you to simultaneously control two 230V AC electric motors via Zipato home automation controllers or any other Z-Wave enabled network. Ability to feedback the shutter/blinds position enables you to not only control vertical directions of your shutters but also finely adjust them, e.g. 30% or 50%. Slim and compact design allows it to easily integrate into regular wall boxes.

- Precise feedback about roller position
- Max load up to 1100W
- Slim, compact Z-Wave module switches and controls all parameters of power that your electrical appliances consume
- Overload protection
- Zero-crossing switch
- Over-the-air firmware update
- Very low power power consumption
- Easy installation





## MICROMODULE SWITCH DOUBLE

Zipato Micromodule Switch Double enables you to control in-wall switch or power outlet with Zipato home automation controllers, any Z-Wave remote or module's built-in push button. This small module installs in the electrical box behind your switch/outlet, and wires in between your switch/outlet and two connected loads. When the module is installed behind a two-gang wall switch, the wall switches no longer directly control the connected loads. Instead, both switches serve as inputs for the module, which has an internal relay to control the connected loads.

- Voltage, Current, Power factor, Instant power wattage and Accumulated power report
- Resistive load 1500W x 2
- Slim, compact Z-Wave module switches and controls all parametres of power that your electrical appliances consume
- Overload protection
- Auto reports wattage when variation exceeds 5%
- New Z-Wave 500 series chip supports multichannel operation and higher data rates (9.6/40/100kbps)
- Over-the-air firmware update



## MM ENERGY METER

Zipato Micromodule Energy Meter monitors total electricity consumption of connected appliances and reports it to Zipato or any other Z-Wave enabled controller in real time. Small and compact size allows easy installation in majority of electricity distribution boxes. It supports two loads up to 6000W each (@ 120V).

- Dual power meter function
- Two amper meter clamp are included in the box
- Instant power wattage and Accumulated power consumption KWh report
- Maximum current measure 60A
- New Z-Wave 500 series
- Over-the-air firmware update
- Very low power consumption



## RGBW LIGHT BULB

Zipato RGBW LED Bulb with dimmer makes home lighting more fun and comfortable. With Zipato RGBW Bulb, you can control color and intensity of home lights from the convenience of your smartphone, or other Z-Wave enabled controller. It has separate warm white, cold white and color LEDs. This allows you to create both colorful light environments and regular white lighting, which is easily customizable from an iOS or Android smartphone.

- Thousands of colors available, warm and cold white, adjustable
- 5 color channels Red, Blue, Green, Warm White and Cool White
- Once connected to smart home controller, users can setup colorful lighting to automatically
- Consumes small amount of power but generates light comparable to 60W incandescent bulb
- Fits into a regular E27 socket
- Supports Z-Wave wireless protocol
- Available for iOS and Android





# WHY ZIPATO?

Features like easy installation, configuration and upgrade, reliability and robustness, speed, compatibility and flexibility in operation with external products, inter-system and applicability are part of the main characteristics of Zipato system.

## INNOVATIVE

Based on cloud technology.

## OPEN

Supports global standards.

## SIMPLE

Wireless, pre-configured devices.

## ECONOMICAL

Powerfull central system requires less additinal components.

## HIGH-PERFORMANCE AND DEPENDABLE

Mesh network, two way, 24/7 support service.

## FUTURE-PROOF

Both Zipabox and Cloud are extremely easy to upgrade.

## GOOD VALUE

Combining security and safety with energy management saves costs today and in the future.

## EVERYONE PROFITS

Users and building owners as well as installers and planners.

zipato®



zipato®

make your home smart

[www.zipato.com](http://www.zipato.com)